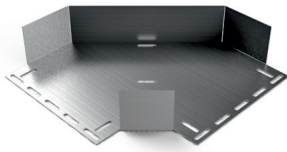
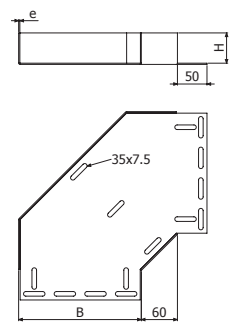




CPU

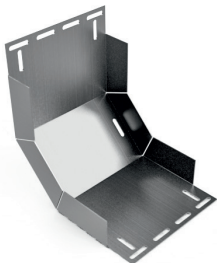


	B		H		GC			
					e=2mm		e=2,5mm	
	mm	inch	mm	inch	REF.	(kg/ud)	REF.	(kg/ud)
CPU 50x15xe	50	2"	15	3/5"	2/2069	0,21		
CPU 100x15xe	100	4"	15	3/5"	2/2070	0,47		
CPU 150x15xe	150	6"	15	3/5"	2/2071	0,81		
CPU 200x15xe	200	8"	15	3/5"	2/2072	1,22		
CPU 300x15xe	300	12"	15	3/5"	2/2073	2,24		
CPU 50x30xe	50	2"	30	1 1/6"	2/2077	0,28	2/2167	0,33
CPU 100x30xe	100	4"	30	1 1/6"	2/2078	0,56	2/2168	0,66
CPU 150x30xe	150	6"	30	1 1/6"	2/2079	0,92	2/2169	1,08
CPU 200x30xe	200	8"	30	1 1/6"	2/2080	1,34	2/2170	1,57
CPU 300x30xe	300	12"	30	1 1/6"	2/2081	2,41	2/2171	2,83
CPU 400x30xe	400	16"	30	1 1/6"	2/2082	3,48	2/2172	4,09
CPU 500x30xe	500	20"	30	1 1/6"	2/2083	4,55	2/2173	5,34
CPU 600x30xe	600	24"	30	1 1/6"	2/2084	5,62	2/2174	6,60
CPU 50x50xe	50	2"	50	2"	2/2085	0,36	2/2175	0,42
CPU 100x50xe	100	4"	50	2"	2/2086	0,67	2/2176	0,79
CPU 150x50xe	150	6"	50	2"	2/2087	1,06	2/2177	1,24
CPU 200x50xe	200	8"	50	2"	2/2088	1,51	2/2178	1,77
CPU 300x50xe	300	12"	50	2"	2/2089	2,64	2/2179	3,10
CPU 400x50xe	400	16"	50	2"	2/2090	4,04	2/2180	4,89
CPU 500x50xe	500	20"	50	2"	2/2091	5,73	2/2181	6,89
CPU 600x50xe	600	24"	50	2"	2/2092	7,70	2/2182	8,88

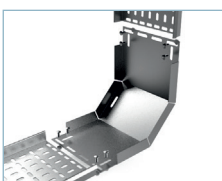
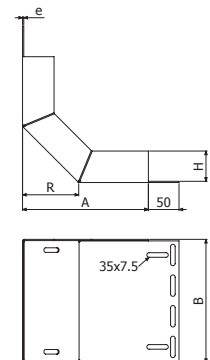


4/100 x B1 (2/6826 - GC)

CCU



	B		H		GC			
					e=2mm		e=2,5mm	
	mm	inch	mm	inch	REF.	(kg/ud)	REF.	(kg/ud)
CCU 50x15xe	50	2"	15	3/5"	2/2249	0,40		
CCU 100x15xe	100	4"	15	3/5"	2/2250	0,73		
CCU 150x15xe	150	6"	15	3/5"	2/2251	1,14		
CCU 200x15xe	200	8"	15	3/5"	2/2252	1,60		
CCU 300x15xe	300	12"	15	3/5"	2/2253	3,21		
CCU 50x30xe	50	2"	30	1 1/6"	2/2257	0,51	2/2347	0,69
CCU 100x30xe	100	4"	30	1 1/6"	2/2258	0,83	2/2348	1,06
CCU 150x30xe	150	6"	30	1 1/6"	2/2259	1,26	2/2349	1,54
CCU 200x30xe	200	8"	30	1 1/6"	2/2260	1,74	2/2350	2,12
CCU 300x30xe	300	12"	30	1 1/6"	2/2261	3,41	2/2351	4,16
CCU 400x30xe	400	16"	30	1 1/6"	2/2262	4,80	2/2352	5,86
CCU 500x30xe	500	20"	30	1 1/6"	2/2263	6,30	2/2353	7,69
CCU 600x30xe	600	24"	30	1 1/6"	2/2264	7,80	2/2354	9,52
CCU 50x50xe	50	2"	50	2"	2/2265	0,60	2/2355	0,83
CCU 100x50xe	100	4"	50	2"	2/2266	0,92	2/2356	1,19
CCU 150x50xe	150	6"	50	2"	2/2267	1,37	2/2357	1,80
CCU 200x50xe	200	8"	50	2"	2/2268	1,87	2/2358	2,41
CCU 300x50xe	300	12"	50	2"	2/2269	3,64	2/2359	4,35
CCU 400x50xe	400	16"	50	2"	2/2270	5,06	2/2360	6,01
CCU 500x50xe	500	20"	50	2"	2/2271	6,65	2/2361	8,50
CCU 600x50xe	600	24"	50	2"	2/2272	9,35	2/2362	10,99



4/100 x B1 (2/6826 - GC)